



FEC[®] Oil Filter For Internal Combustion Engine Test Rig

Methods of test for full-flow lubricating oil filters for internal combustion engines

Part-6 Static burst pressure test

ISO 4548 - 6



Test Perform

✓ Static Burst Pressure Test

Burst Pressure Test of Complete Filter as per ISO 4548-6 for automotive spin-on filters

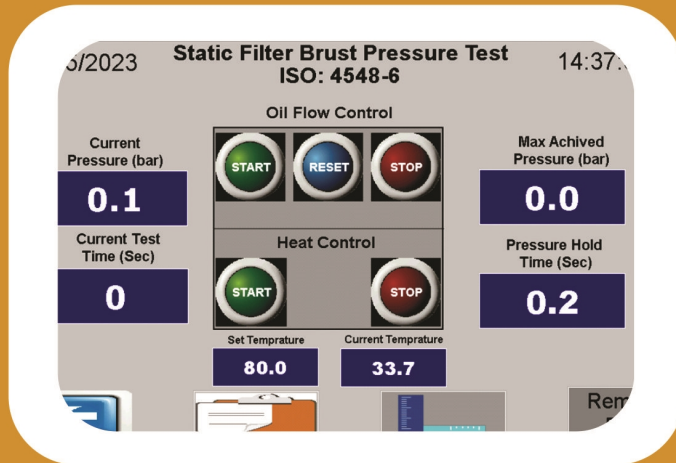
These test methods describe laboratory testing of filters to prove their mechanical integrity. Filters are tested to determine the High pressure of the housing material and construction. These test simulate conditions of engine lubrication system The test condition value should correspond with those actually measured on the intended engine applicable when such information is available



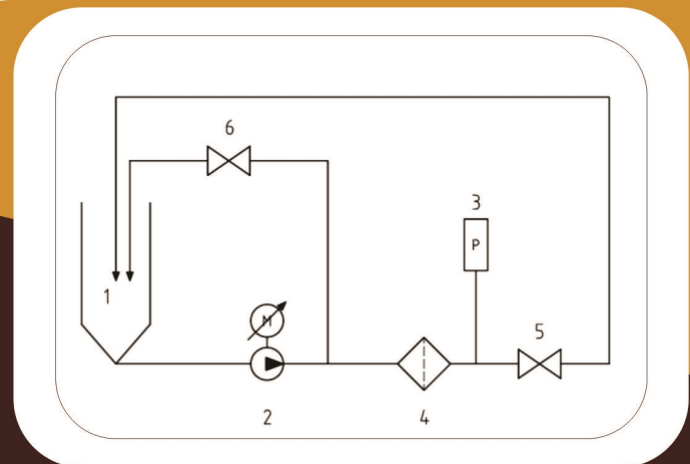
Touch Screen Operating Panel



Oil Filter For Internal Combustion Engine Test Rig Quality Control Equipment



Operating Screen



ISO 4548-6

Features:

- Digitally temperature indicator cum controller
- Digital Pressure Indicator
- Maximum Filter Burst Capacity 50.0 Kg/ cm²
- Top made from stainless steel with drainage pipe.
- Six digits preset counter with adjustable button as per required pulses.
- Programmable timer for set the sequence the pressure resolution 0.1 Sec.
- Automatic impulse testing machine after set the desired pulses.
- Fabrication outer body frame made from M.S. Pipe and cover with G.I Pipe duly Powder Coated.
- Suitable fixture with changeable thread adapter for change the different filters.
- Safety enclosure for filter cover with transparent sheet
- All structure will be made from S.S / Aluminum Extruder pipe covered with GI Sheet duly epoxy automotive paint or Epoxy coated.



World Class

Oil Filter For Internal Combustion Engine Test Rig

