



# FEC<sup>®</sup> Filter Impulse Test Rig

Methods of test for full-flow lubricating oil filters for internal combustion engines  
Part-5 Test for hydraulic pulse durability

**ISO 4548 - 5**



# Test Perform

## ✓ Cold Start Simulation And Hydraulic Pulse Durability Test

### Method of Test for Full-Flow Lubricating oil filters for internal combustion Engines - Cold start simulation and Hydraulic pulse Durability Test

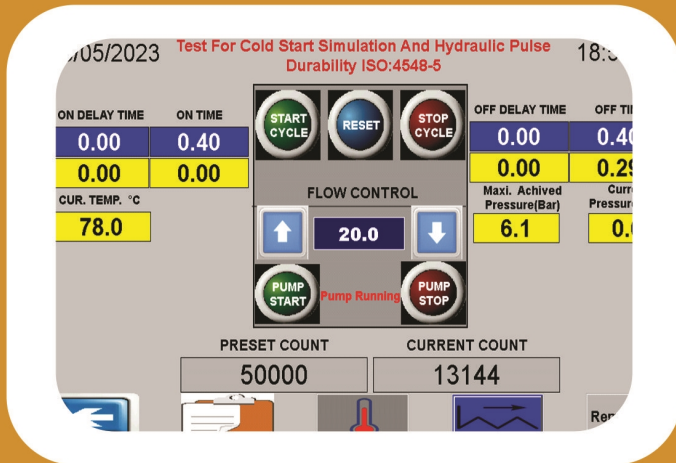
These test methods describe laboratory testing of filters to prove their mechanical integrity. Filters are tested to determine the pressure impulse of the housing material and construction. These test simulate conditions of engine lubrication system cyclic pressure pulsation. The test condition value should correspond with those actually measured on the intended engine applicable when such information is available



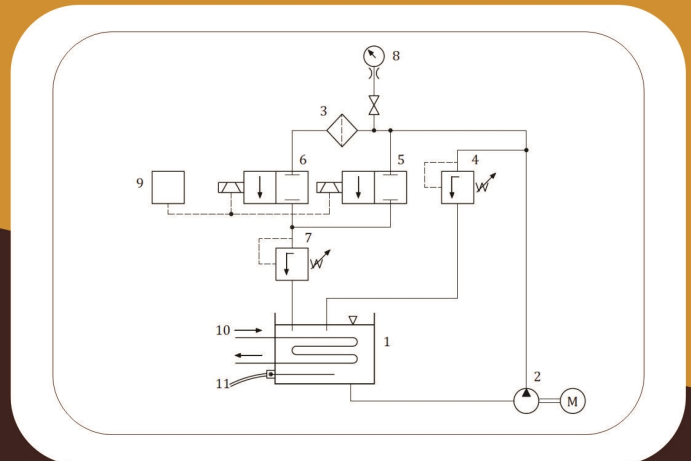
Touch Screen Operating Panel



# Filter Impulse Test Rig Quality Control Equipment



Operating Screen



ISO 4548-5

## Features:

- Digitally temperature indicator cum controller
- Digital Pressure Indicator with pressure sensor
- Top made from stainless steel with drainage pipe
- Six digits preset counter with adjustable button as per required pulses
- Programmable timer for set the sequence the pressure resolution 0.1 Sec
- Automatic impulse testing machine after set the desired pulses
- Fabrication outer body frame made from M.S. Pipe and cover with G.I Pipe duly Powder Coated
- Suitable fixture with changeable thread adapter for change the different filters
- Oscilloscope for generating wave pulses in wave form
- Safety enclosure for filter cover with transparent sheet



# World Class Filter Impulse Test Rig

