



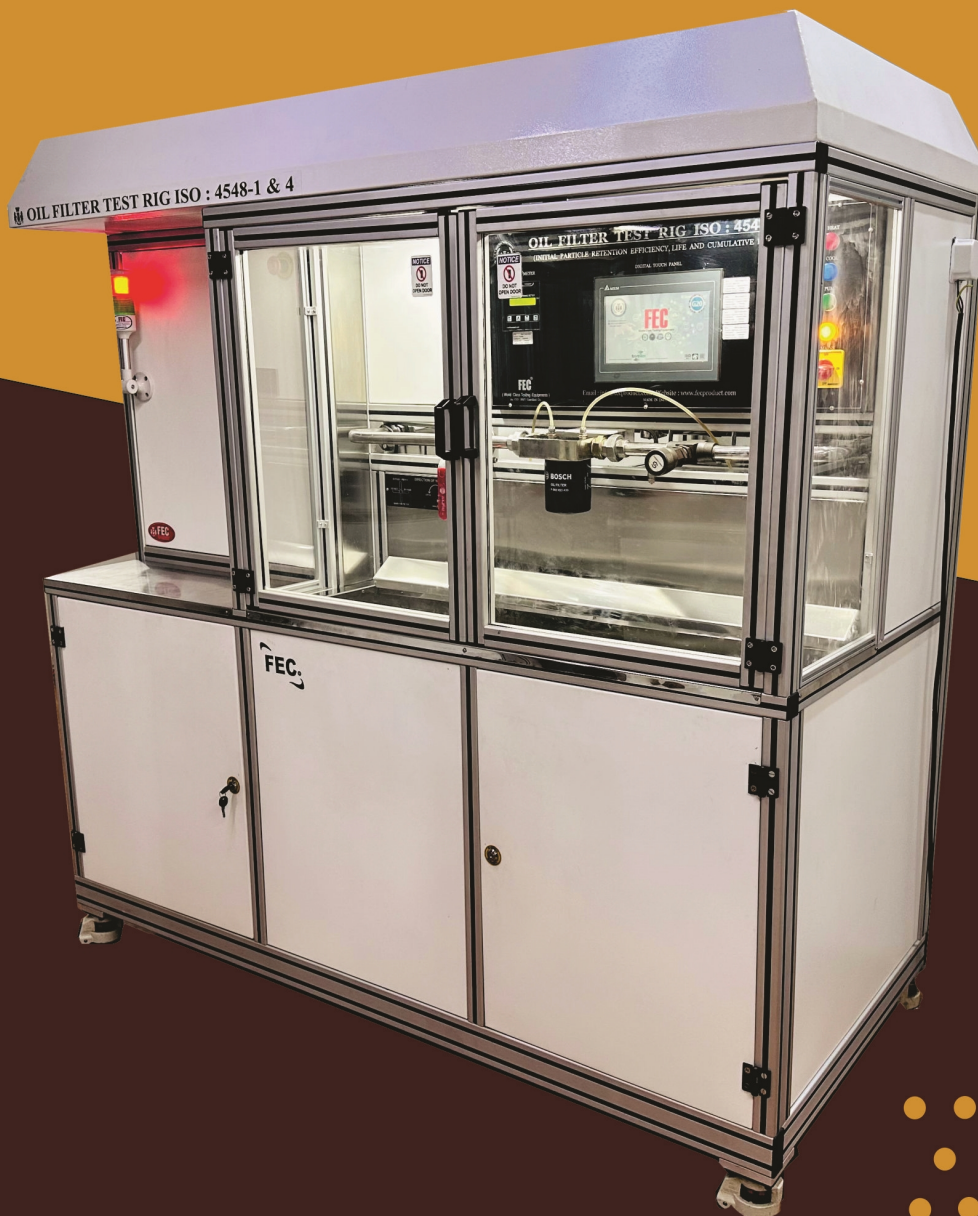
FEC[®] Oil Filter Test Rig

Methods of test for full-flow lubricating oil filters for internal combustion engines

Part-1 Differential pressure / flow characteristics

Part-4 Initial particle retention efficiency, life and cumulative efficiency (gravimetric method)

ISO 4548-1 & 4



Test Perform

- ✓ Flow v/s Differential Pressure
- ✓ Initial Particle Retention Efficiency
- ✓ Dust Holding Capacity (DHC)

ISO 4548-1 Methods of test for full-flow lubricating oil filters for internal combustion engines—
Differential pressure/flow characteristics

ISO 4548-4 : Methods of test for full-flow lubricating oil filters for internal combustion engines—
Initial particle retention efficiency, life and cumulative efficiency (gravimetric method)

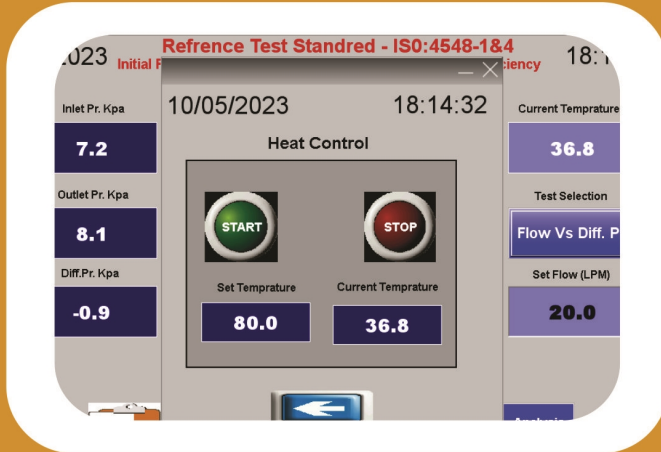


Touch Screen Operating Panel

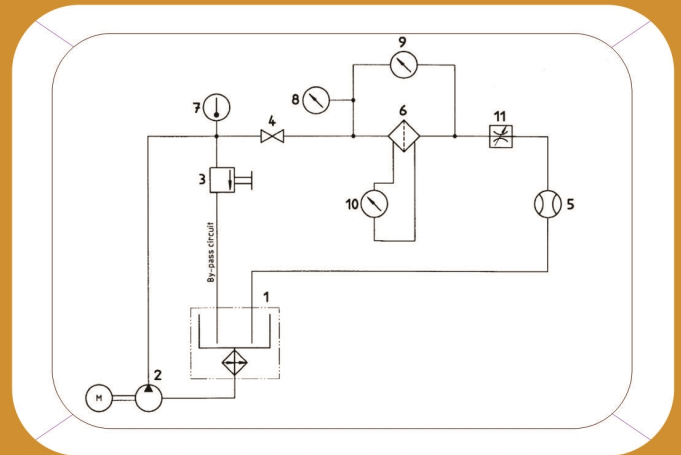


Oil Filter Test Rig

Quality Control Equipment

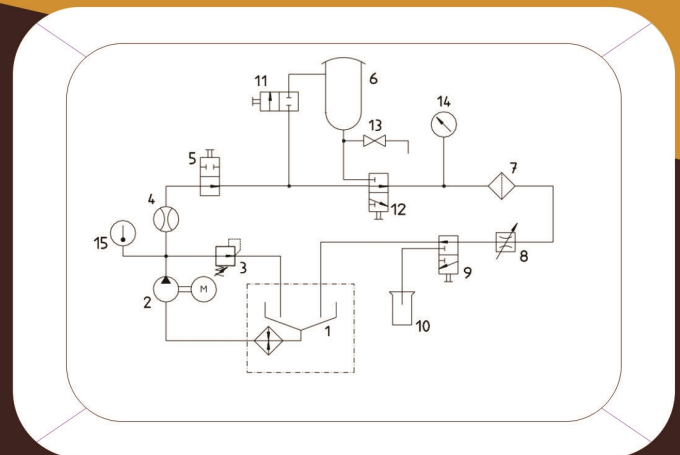


Operating Screen



ISO 4548-1

Reference Test Standard - ISO:4548-1&4							
Initial Particle Retention Efficiency, Life And Cumulative Efficiency							
Dust Feed (Gms)	Differential Pressure	Sr. No.	Dust Feed (Gms)	Differential Pressure	Sr. No.	Dust Feed (Gms)	Differential Pressure
0.0	0.0	11.	0.0	0.0	21.	0.0	0.0
0.0	0.0	12.	0.0	0.0	22.	0.0	0.0
0.0	0.0	13.	0.0	0.0	23.	0.0	0.0
0.0	0.0	14.	0.0	0.0	24.	0.0	0.0
0.0	0.0	15.	0.0	0.0	25.	0.0	0.0
0.0	0.0	16.	0.0	0.0	26.	0.0	0.0
0.0	0.0	17.	0.0	0.0	27.	0.0	0.0
0.0	0.0	18.	0.0	0.0	28.	0.0	0.0
0.0	0.0	19.	0.0	0.0	29.	0.0	0.0
0.0	0.0	20.	0.0	0.0	30.	0.0	0.0
Set Dust Feed Time (Min)		Dust Feed Gms.					
1		1.5					



ISO 4548-4

Scope

This part of ISO 4548 specifies tests for determining the differential pressure/flow characteristics of full-flow lubricating of filters for internal combustion engines. Tests are specified with oils at two viscosities, one to assess the performance of a filter with a cold oil and the other to assess its performance with an oil at a typical operating temperature.

- All structure will be made from S.S / Aluminum Extruder pipe covered with GI Sheet duly epoxy automotive paint or Epoxy coated.
- Equipment with Castor wheel to move the easy
- Upper Plat for and Sink made from S.S. 304 Grade provision to Collect the all washable fluid
- One Nos. of Stainless Steel 304 grade Vessels (Tank) .
- Digitally temperature indicator cum controller
- Digital Pressure Indicator with pressure sensor
- Top made from stainless steel with drainage pipe
- Suitable fixture with changeable thread adapter for change the different filters
- Safety enclosure for filter cover with transparent sheet



World Class Oil Filter Test Rig

